

Centre for *logical*

Ecological Engineering/ Pūhanga rauropi solves problems for societies and for the environment by designing solutions based on the interdependency of people and their ecosystems.

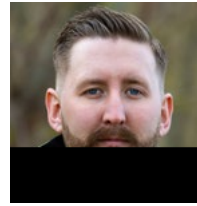
Research Expertise

CELTS focuses on creating design solutions that are holistic, valorise waste resources and are regenerative so align to a circular economy. Most research projects centre around Clean Water Technologies (CWT).

Research Members

CELTS was founded by Associate Professor Aisling (Ash) O'Sullivan in 2006 to fill the research gap in Ecological Engineering within Aotearoa New Zealand. CELTS is part of the Department of Civil and Natural Resources Engineering / P hanga Metarahi me te Rawa Taiao at the University of Canterbury (UC). We collaborate with industry, iwi and councils in designing and implementing our research ventures.

POST-DOC



I g
l tase v

ADJUNCT



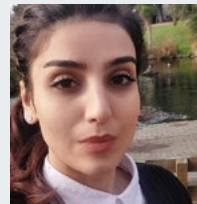
n re e pan

RESEARCH



k knl koo

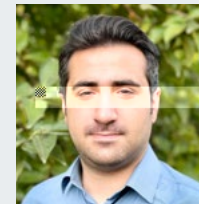
PHD



Oale ad o re



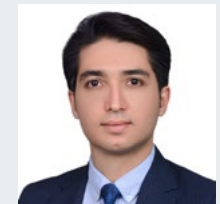
Dk kn kh i o



I kaa Cdkh i e

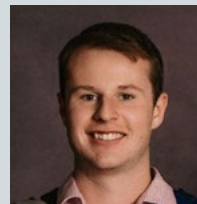


ooeg Ok v
a rr hdk



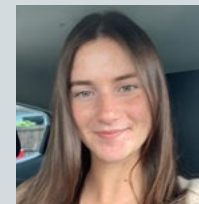
i nave

MASTERS

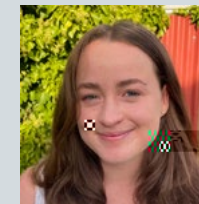


D rok Gaæ c

HONOURS



ah ku



I ed h l cd

LEADER



rkb n æle c
K O fier

PROJECT COORDINATOR



i anl kga

